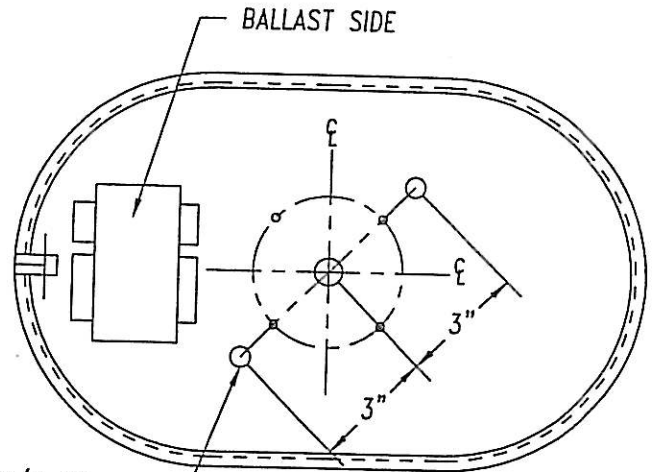


INSTALLATION INSTRUCTIONS BCO Series Wall Mount



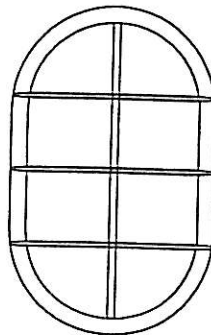
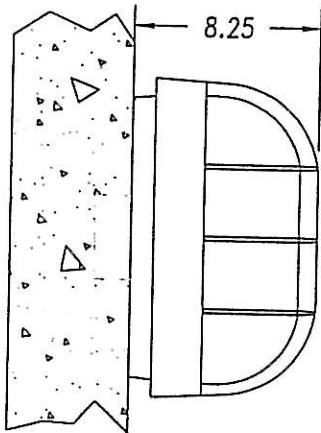
- BO (WALL MOUNT ONLY)
- LOOSEN FACE HOUSING SCREW WITH 3/16" ALLEN WRENCH.
 - REMOVE BALLAST BARRIER USING PHILLIPS SCREWDRIVER.
 - CONNECT LEAD WIRES USING WIRE NUTS.
 - ATTACH FIXTURE TO J-BOX (BY OTHERS) VERTICAL MOUNTING REQUIRES HINGE SIDE OF FIXTURE ON TOP.
 - CONTRACTOR TO DRILL (2) 1/4-20 AUXILIARY MOUNTING HOLES PER DRAWING.

NOTE: THIS FIXTURE MAY BE MOUNTED VERTICALLY OR HORIZONTALLY.

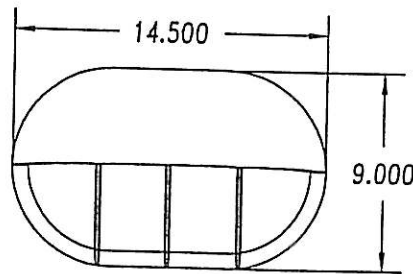


SLIP 1/4-20
TYP. 2X
ANCHORS BY OTHERS
INSTALL FOR 100LB.
PULL

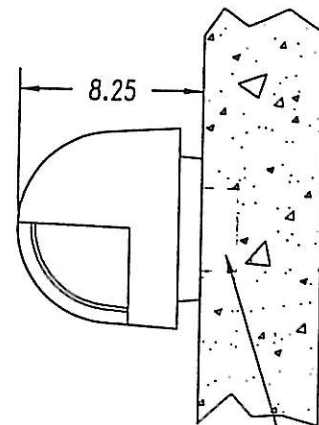
MOUNTING DETAILS:
HOUSING - FRONT VIEW
AUXILIARY MOUNTING HOLES
(BY CONTRATOR)



CAST GUARD



CAST SHIELD



CAST J-BOX
(BY OTHERS)

WARNINGS:

- POWER MUST BE TURNED OFF DURING INSTALLATION AND RELAMPING. THE LAMP AND FIXTURE OPERATE AT HIGH TEMPERATURES. CONTACT WITH COMBUSTIBLE MATERIAL CAN CAUSE SEVERE BURNS.
- LIGHT FIXTURES MUST BE INSTALLED BY A LICENSED ELECTRICIAN IN ACCORDANCE WITH THE NATIONAL CODE AND ANY LOCAL CODES THAT APPLY.
- DO NOT USE ON UNDERGROUND 480V CIRCUITS.
- INSTALL FIXTURES ACCORDING TO MARKING LABELS.
- LABELLED BALLAST VOLTAGE MUST MATCH SUPPLY VOLTAGE.
- PROTECT ALL WIRING CONNECTIONS WITH APPROVED INSULATORS (NOT INCLUDED).

NOTE:
HUBBELL LIGHTING IS NOT RESPONSIBLE FOR ANY FIELD MODIFICATIONS OR ALTERATIONS.



Hubbell Lighting Inc
701 Millennium Blvd
Greenville, SC 29607
864 678 1000

HUBBELL RESERVES THE RIGHT TO MAKE DESIGN CHANGES TO IMPROVE THE PERFORMANCE AND MANUFACTURING METHODS OF THE LUMINAIRE, WITHOUT CHANGING THE INSTALLED APPEARANCE OR SPECIFICATIONS.

DRWN.	DATE
JGR	9/1/99
DRWG. NO.	6017864D