

GFP SERIES

CEILING MOUNT

Cat. #		Approvals
Job	Type	

DEVINE LIGHTING™

INTENDED USE

For ceiling mounted canopy and parking garage applications from an 8-14 foot mounting height; Wide range of available wattages and lamping options, from 26w fluorescent to 150w PS MH, including 70w or 100w Sylvania Icetron® induction systems, rated for 100,000hrs; Lumen packages ranging from 1,800-16,000; Available in compact 10" or medium 14"

CONSTRUCTION

Rugged cast aluminum housing with 3/4" wiring hubs and stainless steel screw closure and aircraft cable lens retainer; Rounded corners for increased durability; Clear prismatic polycarbonate lens

OPTIC

Type V square distribution; High gloss white reflector

ELECTRICAL

120V, 277V, 347V, and Multi-Tap (120V-277V) available; Quick Mount option offers quick disconnect for easy installation

MOUNTING

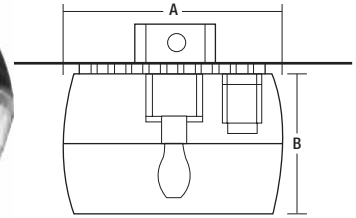
Surface mount over recessed boxes; Quick Mount wet location box; Adjustable trunnion mount, pendant mount.

OPTIONS

Options include tamper proof housing, photocell and emergency quartz re-strike to provide path of egress in emergency situations

LISTINGS

Listed to UL1598 for use in wet locations; Induction unit rated at 40°C - 104°F.



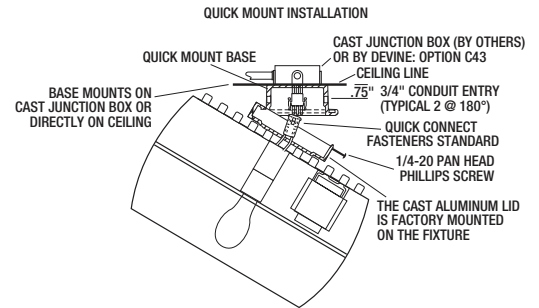
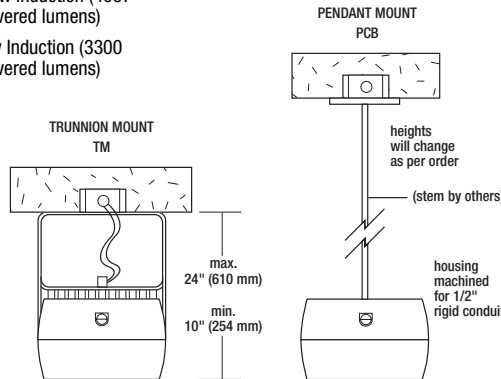
	A	B
GFO40	10"	7"
	254 mm	178 mm
GFP80	14 1/4"	8 1/2"
	362 mm	216 mm



ORDERING INFORMATION

ORDERING EXAMPLE: GFP80-100MH-MT-DB-QM-LP

SERIES	WATTAGE/SOURCE	VOLTAGE ²	FINISH	MOUNT	OPTIONS
GFO40 GFP40 Series	GFO40	120 120V	DB Dark Bronze	TM Trunnion mount	C43 Cast junction box
GFP80 GFP80 Series	70HPS 70w HPS, medium base	277 277V	BLK Black	QM Machined & counter-balanced for 1/2" pendant, stem by others (not available for GFO40 Series)	TP Tamper proof
	70MH 70w PSMH, medium base	MT Multi-Tap 120/208/240/277V	WHT White		PC⁵ Photocell
	2PLC13-ELB 2 13w CFL, G24q-1 base	347 347V	SAL Platinum		F Fusing
	PLC26-ELB 26w CFL, G24q-3 base	U 120-277V (induction)			EMQ³ Emergency quartz Restrike (socket only)
	GFO80/GFP80				EMQLP³ EMQ lamp
	100HPS 100w HPS, medium base				LP⁴ Lamp included
	150HPS 150w HPS, medium base				
	100MH 100w PSMH, medium base				
	150P 150w PSMH, medium base				
	2PLC26 2 26w CFL, G24d-3 base, mag.				
	PLT42-ELB 42w CFL, GX24q-4 base				
	100I¹ 100w Induction (4067 delivered lumens)				
	70I¹ 70w Induction (3300 delivered lumens)				



1 Contains Sylvania Icetron® system, 4100K, Available in GFP80 model only, 100,000hr lamp life
2 50Hz, 220/240V available (consult factory)
3 Not available on induction
4 Lamp included for induction
5 Specify voltage

Due to our continued efforts to improve our products, product specifications are subject to change without notice.

DEVINE LIGHTING™

Devine Lighting • 701 Millennium Boulevard • Greenville, SC 29607 • PHONE: 864-678-1000

For more information visit our web site: www.devine-ltg.com