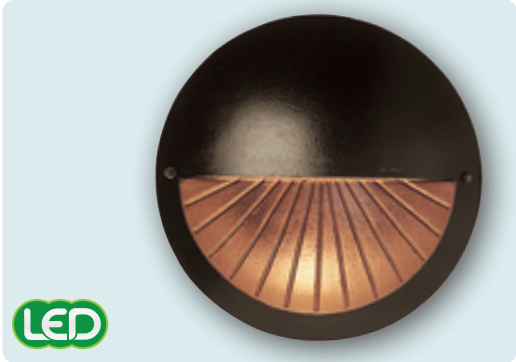


LMS 400/500/600

Steplight

FEATURES

- New 5w LED available in LMS 400 series
- Rugged Devine design cast aluminum (optional cast bronze) construction
- Housing designs for concrete pour and drywall installations
- 3/4" wiring box hubs
- Stainless steel allen-head tamper-resistant hardware
- Formed aluminum reflector provides soft, uniform steplight distribution
- Clear tempered glass lens is mounted for cut-off distribution; Decorative glow from lower face adds architectural element
- Three sizes allow proper scale and wattage sources for various applications
- Standard finishes are dark bronze, black, white and platinum; Optional cast bronze face has brushed satin finish
- Units designed for use in wet locations

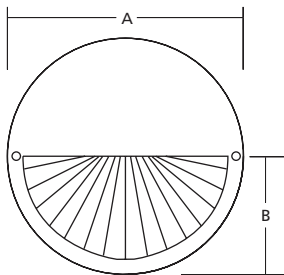


STEPLIGHTS

ORDERING INFORMATION

SERIES	WATTAGE/SOURCE	VOLTAGE	FINISH	OPTIONS
LMS400 LMS 400 Series	LMS 400 SERIES	120 120V	DB Dark Bronze	DW¹ Drywall
LMS500 LMS 500 Series	PL7 7w CPL, G23 base, mag.	277 277V	BLK Black	CP¹ Concrete pour
LMS600 LMS 600 Series	PLC13 13w CPL, GX23-2 base, mag.	MT Multi-Tap 120/208/240/277V	WHT White	BZ Cast bronze face
	40INC 40w Incandescent, medium base	347 347V	SAL Platinum	BZ1 All cast bronze fixture
	5L² 5w LED			F Fusing
	LMS 500 SERIES			LP Lamp included
	70HPS 70w HPS, medium base			
	70MH 70w PSMH, medium base			
	100INC 100w Incandescent, medium base			
	LMS 600 SERIES			
	100HPS 100w HPS, medium base			
	70MH 70w PSMH, medium base			
	100MH 100w PSMH, medium base			
	PLT26-ELB 26w CFL, GX24q-4 base			
	2PLT26-ELB 2 26w CFL, GX24q-4 base			
	200INC 200w Incandescent, medium base			

1 Must select drywall or concrete pour
2 120V only, 73 lumens, 6530°K CCT



	A	B	Depth
LMS400	7 1/4"	3 5/8"	4"
	184 mm	92 mm	102 mm
LMS500	9 1/2"	4 3/4"	6"
	241 mm	121 mm	152 mm
LMS600	13"	6 1/2"	7"
	330 mm	165 mm	178 mm